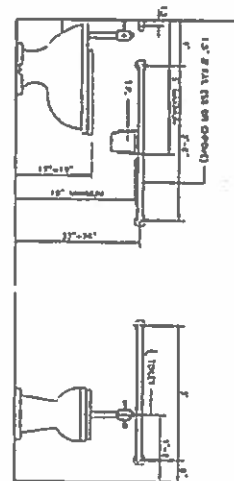


COUNTER SINK DETAIL

COUNTER DETAIL



TOILET DETAILS

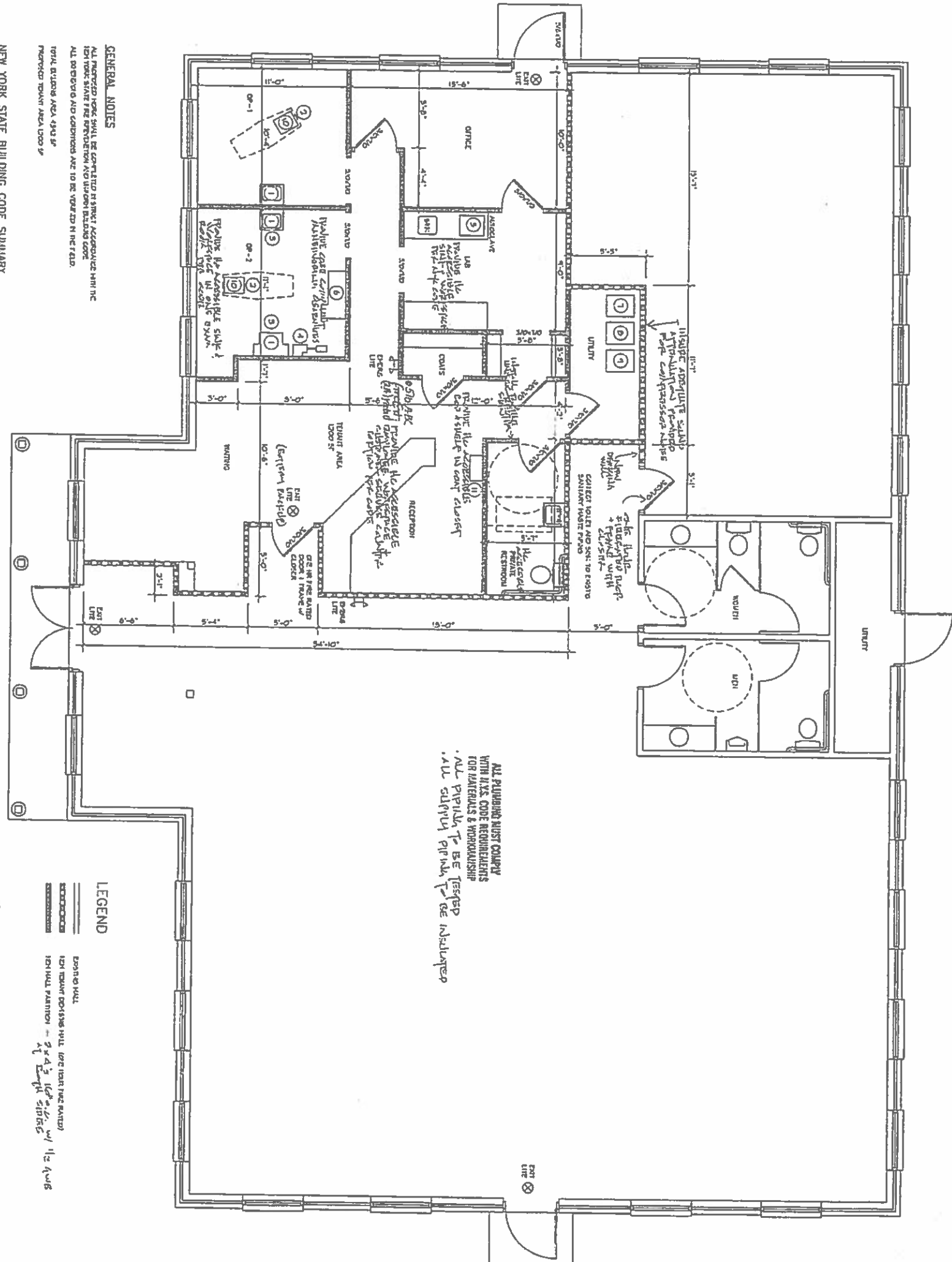
HANDICAP ACCESSIBILITY DETAILS

EQUIPMENT NOTES

1. SINK - COLD WATER HOT WATER AND SAVING PRESS
2. MIRROR TO VENT CLOSET
3. SINK - 1/2" AIR LINE 4-1/2" FROM FLOOR TO CENTER LINE BACKSPLASH
4. SINK - 1/2" AIR LINE 4-1/2" FROM FLOOR TO CENTER LINE BACKSPLASH
5. AIRGAP - REQUIRED TO VENT CLOSET
6. SINK - 1/2" AIR LINE 4-1/2" FROM FLOOR TO CENTER LINE BACKSPLASH
7. SINK - 1/2" AIR LINE 4-1/2" FROM FLOOR TO CENTER LINE BACKSPLASH
8. SINK - 1/2" AIR LINE 4-1/2" FROM FLOOR TO CENTER LINE BACKSPLASH
9. SINK - 1/2" AIR LINE 4-1/2" FROM FLOOR TO CENTER LINE BACKSPLASH
10. SINK - 1/2" AIR LINE 4-1/2" FROM FLOOR TO CENTER LINE BACKSPLASH

CONCRETE WALL CONSTRUCTION
 ONE LAYER FIRE RATED WALL
 ONE LAYER AIR TIGHT FIRE RATED GYP OR PLANK
 2x4 FLOOR JOIST 2x4, FIRE RATED GYP OR PLANK
 WALL TO BE BUILT TO THE TOP OF JOIST
 CRUSH ABOVE

DEMISING WALL DETAIL



GENERAL NOTES

ALL PROJECTS MUST BE COMPLETED IN STRICT ACCORDANCE WITH THE
 NEW YORK STATE FIRE PREVENTION AND SAFETY BUILDING CODE
 ALL DOORS AND CONDITIONS ARE TO BE VERIFIED IN THE FIELD.
 TOTAL STUDY AREA 4940 SF
 PROJECTED TOTAL AREA 1000 SF

NEW YORK STATE BUILDING CODE SUMMARY

- 1. OCCUPANCY CLASSIFICATION
- 2. GENERAL DESIGN - PROTECTIVE SERVICES (ELECTRICAL)
- 3. CONSTRUCTION CLASSIFICATION
- 4. TYPE V
- 5. IDENTIFY FIRE AREA
- 6. FIRE ALARM
- 7. FIRE ALARM
- 8. FIRE ALARM
- 9. FIRE ALARM
- 10. FIRE ALARM

ALL PLUMBING MUST COMPLY
 WITH N.Y.S. CODE REQUIREMENTS
 FOR MATERIALS & WORKMANSHIP
 ALL PIPING TO BE TESTED
 ALL SUPPLY PIPING TO BE INSULATED

LEGEND

- 1. CONCRETE WALL
- 2. CONCRETE WALL
- 3. CONCRETE WALL
- 4. CONCRETE WALL
- 5. CONCRETE WALL
- 6. CONCRETE WALL
- 7. CONCRETE WALL
- 8. CONCRETE WALL
- 9. CONCRETE WALL
- 10. CONCRETE WALL

TOWN

TOWN OF CLIFTON PARK

SEAL OF FIRE PREVENTION
 TOWN OF CLIFTON PARK
 ONE COPY ON THE SITE AT ALL TIMES